

Yankee Aerobatic Practice Area (APA)

Surface – 5,000' AGL

N 38° 24' 24.46"

W 77° 27' 59.29"

N 38° 23' 27.78"

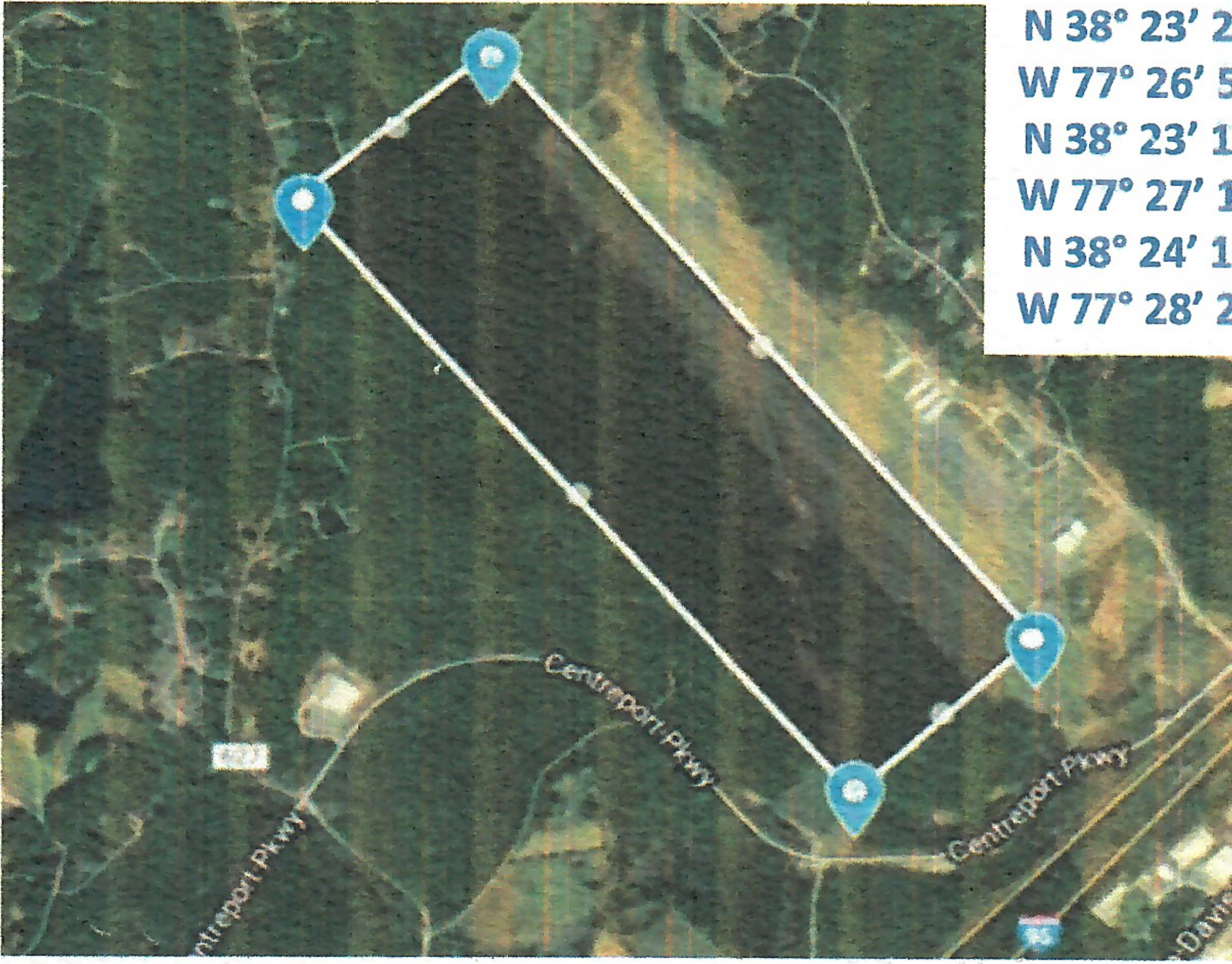
W 77° 26' 56.74"

N 38° 23' 13.00"

W 77° 27' 17.20"

N 38° 24' 10.20"

W 77° 28' 20.70"



Pre-Flight

1. Call Leidos FSS (888-766-8267) to activate APA & request NOTAM
2. Call Potomac TRACON (540-349-7530/7586) & Leidos FSS ~1 hour prior to aerobatic activity w/expected duration of activity

Inflight

1. Est radio contact w/safety observer...monitor KRMN UNICOM
2. Monitor ATC if required
3. Term aerobatic activity if aircraft enters pattern, yield right of way

Post-Flight

1. Call Potomac TRACON (540-349-7530/7586) & Leidos FSS to terminate

Requirements and Restrictions

1. Aerobatic flight confined to APA designated area and altitudes
2. Pilots comply w/personal qualifications if more restrictive
3. Ops from SR to SS or 0900-2000 EST whichever is more restrictive
4. "Yankee 1" callsign, transponder code 5225 w/in APA
5. Min 5 miles vis & 4,000' ceiling required
6. A safety observer required; discrete freq OK but KRMN UNICOM freq monitored by pilot or safety observer at all times
7. No aero over/within 500' from open-air assembly, congested area, city, town, or settlement.

Current at of 1 Apr 2018